

# INTEGRITY TREE IMAGING

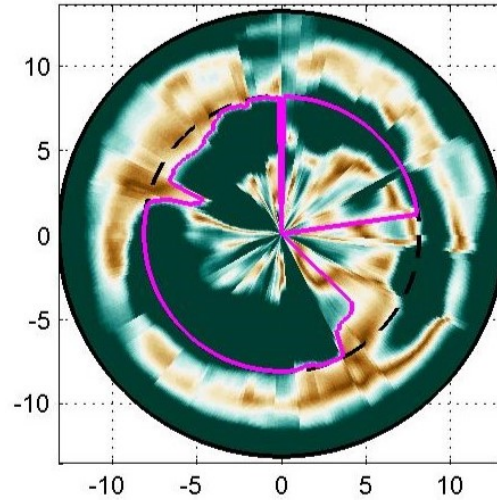


See your tree from the inside out.



What You See Is What You Get

Good information is key to deciding which trees to keep or remove in urban forestry, as you accommodate population growth yet maintain a healthy canopy. It can be a tricky balance. **ITI's TRU-900** imaging equipment gives you accurate and detailed images of the inside of your trees--no tricks here, just good information. The trunk below was scanned one foot above the cut line, and its processed images reveal a remarkably accurate virtual saw cut.

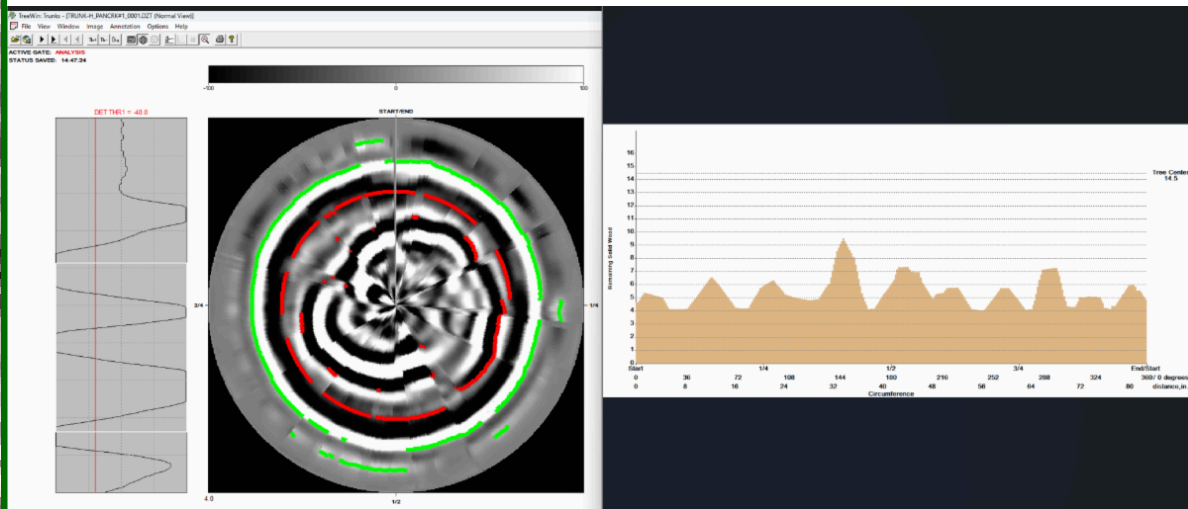


Estimated Compromised = 51%

[See More Images from Recent Tree Scans](#)

### Collaborative Data

Radar scans of trees are processed through multiple applications to confirm the findings. For example, these additional images below support the same conclusion that the pictures above show. This redundancy achieves the highest burden of proof and justification for prescribed tree care and management. Today, what seemed **impossible** to know in the past is now **possible** to know with this current technology.



## Precise and Accurate Results

Experience and enjoy success like never before using information and data provided by ITI. Communities and surrounding neighbors trust those responsible for caring for our valuable trees to use the best methods available. This level of precision and accuracy results in the most reliable information unmatched by other technology or methods. Best of all, it's affordable.

[Request Prices](#)



See your tree from the inside out.

242 Cathey Lane, Canton, NC 28716  
 (828) 593-9685 | [ITIRadar@gmail.com](mailto:ITIRadar@gmail.com)



Integrity Tree Imaging | 242 Cathey Lane | Canton, NC 28716 US

[Unsubscribe](#) | [Update Profile](#) | [Constant Contact Data Notice](#)