

INTEGRITY TREE IMAGING



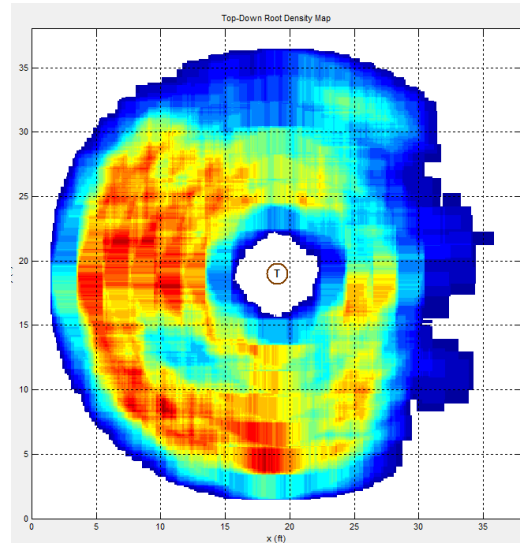
See your tree from the inside out.



Out Front and Leading the Way

On the campus of this 34,000-student major university is where you will find a professional arborist (campus staff) taking tree care to the most advanced level. Given some thought, this is the natural setting for this type of state-of-the-art practice. Is your school, municipality, or facility being outpaced by others using the advanced analysis provided by Integrity Tree Imaging (ITI)? We can catch you up! Improve your liability standing. Reduce your exposure to risk. Potentially lower your insurance rate. Save considerable money and resources by knowing exactly if your trees are dangerous and need to be

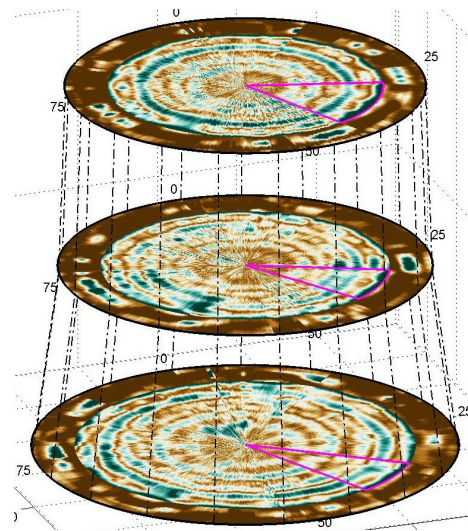
replaced or are sustainable and safe.



[See More Images from Recent Tree Scans](#)

On the Outside Looking In

That is the essence of our work at Integrity Tree Imaging. "See Your Tree from the Inside Out." Moving forward, our driving force is to provide you with clear, accurate analysis of your trees with the most comprehensive tree analysis currently possible. Don't be late to the party and miss the benefits that revolutionize successful tree diagnosis and treatment. Once you apply the services of ITI, you will wonder why you ever did without the images and analysis that we provide.



Don't Hang Out in the Slow Lane

You'll get run over by tree failure. The advanced analysis, provided by ITI, is

the best preemptive action available to keep tragedy from occurring. ITI delivers the most accurate view of the critical areas of your trees (trunk AND roots). Advanced tree analysis is now an *exact science* with in-depth analysis you can trust to be correct from Integrity Tree Imaging.

[Request Information](#)



See your tree from the inside out.

242 Cathey Lane, Canton, NC 28716
(828) 593-9685 | ITIRadar@gmail.com | www.itiradar.com



[Integrity Tree Imaging](#) | [242 Cathey Lane](#) | [Canton, NC 28716 US](#)

[Unsubscribe](#) | [Update Profile](#) | [Constant Contact Data Notice](#)